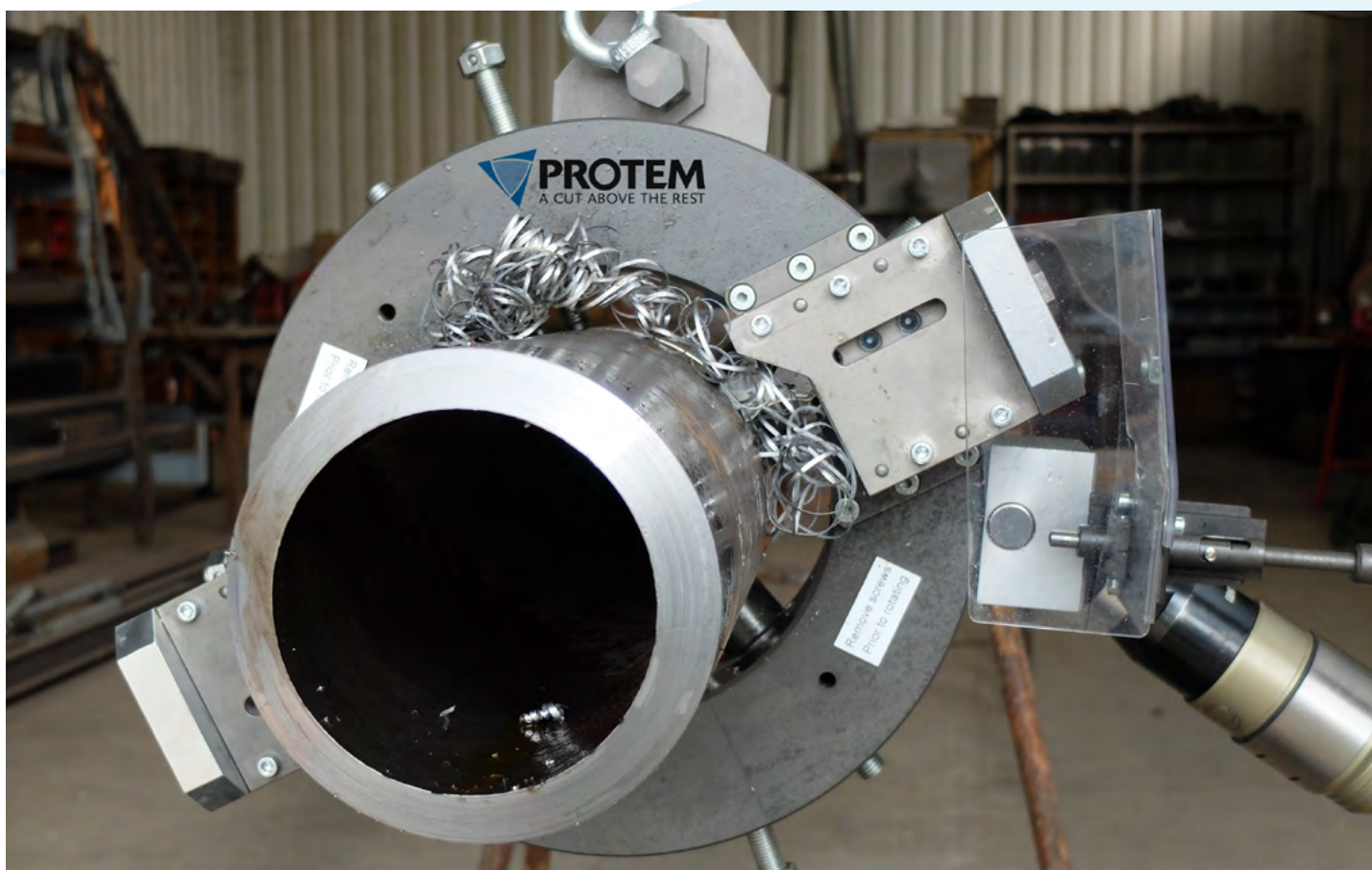


# ■ TT-NG SERIES

## ORBITAL PIPE CUTTING & BEVELING

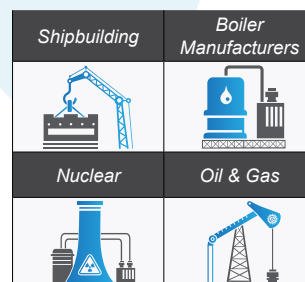
Ø 60.3 mm - 4267.2 mm  
Ø 2" - 168"



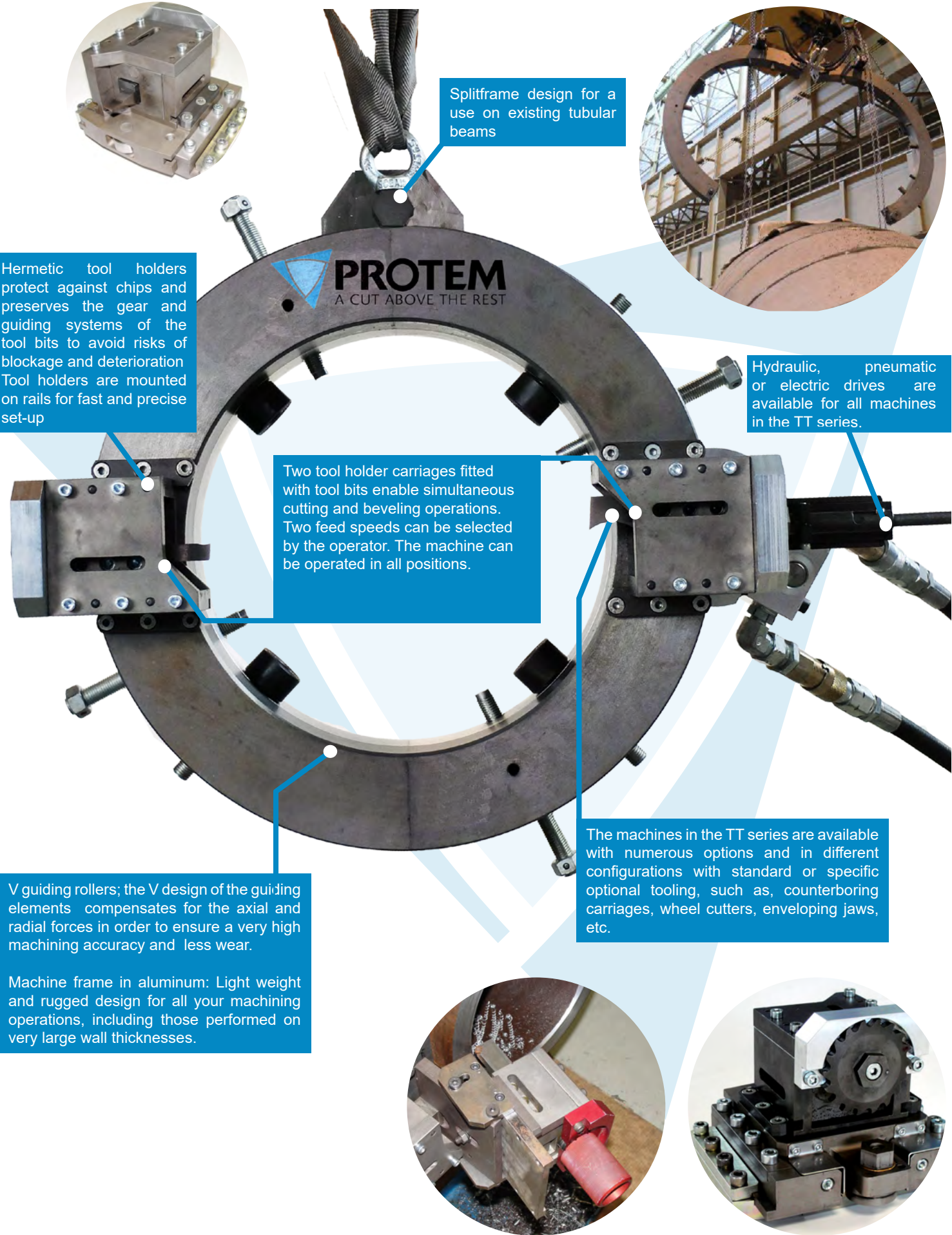
OD MOUNT MACHINING

TT-NG Series	Machining Capacity	
TT-NG 168	60.3 - 168.3 mm	2" - 6"
TT-NG 219	114.3 - 219.1 mm	4" - 8"
TT-NG 273	168.3 - 273.1mm	6" - 10"
TT-NG 323	219.1 - 323.9 mm	8" - 12"
TT-NG 406	273.1 - 406.4 mm	10" - 16"
TT-NG 508	323.9 - 508 mm	12" - 20"
TT-NG 610	406.4 - 610 mm	16" - 24"
TT-NG 762	558.8 - 762 mm	22" - 30"
TT-NG 900	660.4 - 914.4 mm	26" - 36"
TT-NG 1016	812.8 - 1016 mm	32" - 40"
TT-NG 1200	914.4 - 1219.2 mm	36" - 48"
TT-NG 1400	1120 - 1480 mm	44" - 58"

### INDUSTRIES :



# ORBITAL TUBE CUTTING & BEVELING | SPLIT-FRAME CLAMSHELLS



**PROTEM**  
A CUT ABOVE THE REST

Splitframe design for a use on existing tubular beams

Hermetic tool holders protect against chips and preserves the gear and guiding systems of the tool bits to avoid risks of blockage and deterioration. Tool holders are mounted on rails for fast and precise set-up.

Two tool holder carriages fitted with tool bits enable simultaneous cutting and beveling operations. Two feed speeds can be selected by the operator. The machine can be operated in all positions.

Hydraulic, pneumatic or electric drives are available for all machines in the TT series.

V guiding rollers; the V design of the guiding elements compensates for the axial and radial forces in order to ensure a very high machining accuracy and less wear.

Machine frame in aluminum: Light weight and rugged design for all your machining operations, including those performed on very large wall thicknesses.

The machines in the TT series are available with numerous options and in different configurations with standard or specific optional tooling, such as, counterboring carriages, wheel cutters, enveloping jaws, etc.

OD MOUNT MACHINING



## TT-NG

Ø 60.3 - 4267.2 mm (2" - 168")

### DESCRIPTION :

By decades of proven reliable technology and constant further development, the TTNG-machines highlight premium tools for perfect welding preparations. Designed for standard and especially for heavy walls tubes and pipes, for virtually all kind of materials, the TTNG meet the demand for high accuracy on today's welding applications.

The profile is rounded with the machines power, rigidity, dependability, versatility and low weight. .

To mount the machine on the tube the two halfshells connected with a hinge can be opened.

The alignment of centricity is done by separately adjustable clamping jaws. The perpendicularity will be adjusted in the same time. Additional clamping screws allow to bear the axial forces. Tool carriages with covered spindles enable to ensure a protection against chips.

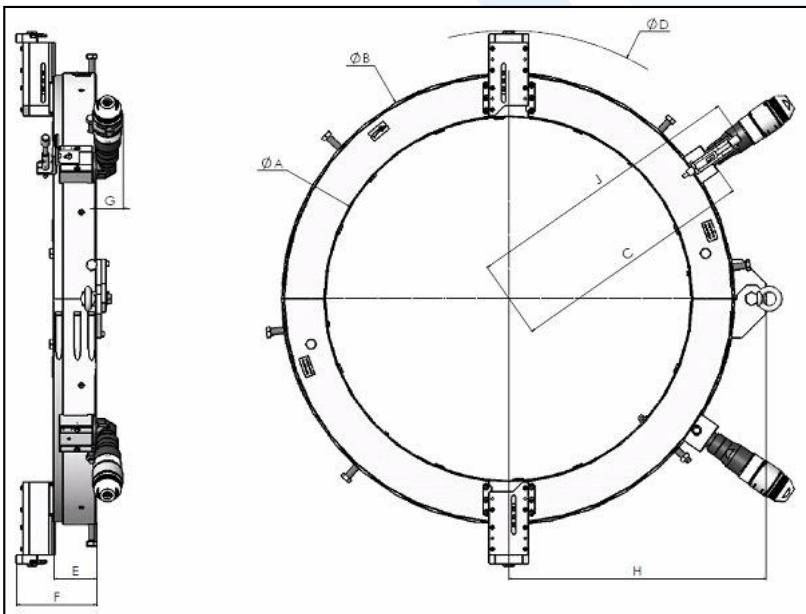
Clamshells for demanding construction, maintenance, dismantling projects.



TTNG323 with Pneumatic drive

Beveling	Cutting	Facing	Counterboring	Surfacing
✓	✓	✓	✓	✗

### DIMENSIONS :

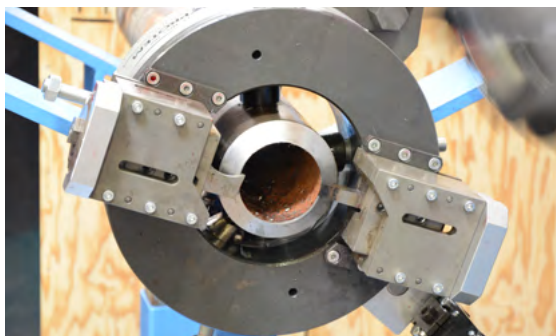


Technical details & larger models up to 168" (4267 mm) on request

### TECHNICAL FEATURES

Machine	TTNG
<b>Machining Capacity</b>	60.3 mm (2") ID 4267.2 mm (168") OD
<b>Specific shapes &amp; angles</b>	I, V, J, X or any other specific weld preps special shape on request
<b>Clamping</b>	manual, without key
<b>Feed</b>	Automatic with clutch
<b>Drive Power</b>	Pneumatic or hydraulic Electric drives on request
<i>Pneumatic driven machines have to be used with a lubricating filter. Recommended option: regulation valve.</i>	

## TT168



TT168 Cutting and beveling machine with pneumatic drive

Ø 60.3 - 168.3 mm (2" - 6")



ORDER NO.	DESCRIPTION
TT168	TT168 Cutting and beveling machine with pneumatic drive
TT168HY	TT168HY Cutting and beveling machine with hydraulic drive
TT168E	TT168E Cutting and beveling machine with electric drive

### ▼ DIMENSIONS :

ØA	ØB	C	ØD	E	F	G	H	J
175 mm 6.889"	325 mm 12.795"	217 mm 8.543"	460 mm 18.110"	108.6 mm 4.252"	202.6 mm 7.953"	66 mm 2.958"	216 mm 8.504"	407 mm 16.024"

## TT219



TT219 Cutting and beveling machine with pneumatic drive

Ø 114.3 - 219.3 mm (4" - 8")



ORDER NO.	DESCRIPTION
TT219	TT219 Cutting and beveling machine with pneumatic drive
TT219HY	TT219HY Cutting and beveling machine with hydraulic drive
TT219E	TT219E Cutting and beveling machine with electric drive

### ▼ DIMENSIONS :

ØA	ØB	C	ØD	E	F	G	H	J
223 mm 8.779"	373 mm 14.685"	241 mm 9.488"	508 mm 20"	108.6 mm 4.252"	202.6 mm 7.953"	66 mm 2.958"	240 mm 9.449"	431 mm 16.968"

## TT273



TT273 Cutting and beveling machine with pneumatic drive

Ø 168.3 - 273.1 mm (6" - 10")



ORDER NO.	DESCRIPTION
TT273	TT273 Cutting and beveling machine with pneumatic drive
TT273HY	TT273HY Cutting and beveling machine with hydraulic drive
TT273E	TT273E Cutting and beveling machine with electric drive

### ▼ DIMENSIONS :

ØA	ØB	C	ØD	E	F	G	H	J
283 mm 11.142"	433 mm 17.047"	271 mm 10.669"	570 mm 22.441"	108.6 mm 4.252"	202.6 mm 7.953"	66 mm 2.958"	270 mm 10.629"	462 mm 18.189"

## TT323



TT323 Cutting and beveling machine with pneumatic drive

Ø 219.1 - 323.9 mm (8" - 12")



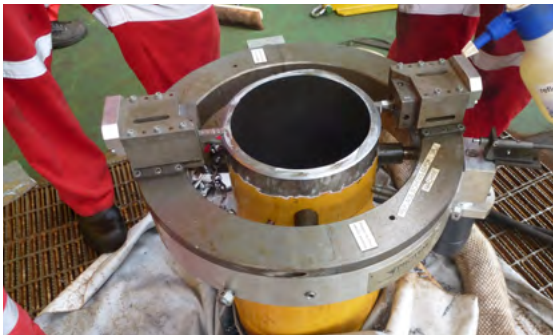
ORDER NO.	DESCRIPTION
TT323	TT323 Cutting and beveling machine with pneumatic drive
TT323HY	TT323HY Cutting and beveling machine with hydraulic drive
TT323E	TT323E Cutting and beveling machine with electric drive

### ▼ DIMENSIONS :

ØA	ØB	C	ØD	E	F	G	H	J
331 mm 13.031"	481 mm 18.937"	295 mm 11.614"	619 mm 24.370"	108.6 mm 4.252"	202.6 mm 7.953"	66 mm 2.958"	294 mm 11.574"	486 mm 19.134"



## TT406



TT406 Cutting and beveling machine with pneumatic drive

Ø 273.1 - 406.4 mm (10" - 16")

≈ 74 kg  
≈ 163 lbs

ORDER NO.	DESCRIPTION
TT406	TT406 Cutting and beveling machine with pneumatic drive
TT406HY	TT406HY Cutting and beveling machine with hydraulic drive
TT406E	TT406E Cutting and beveling machine with electric drive

### DIMENSIONS :

ØA	ØB	C	ØD	E	F	G	H	J
415 mm 16.338"	565 mm 22.244"	337 mm 13.267"	688 mm 27.086"	108.6 mm 4.252"	202.6 mm 7.953"	66 mm 2.958"	336 mm 13.228"	521 mm 20.512"

## TT508



TT508 Cutting and beveling machine with pneumatic drive

Ø 323.9 - 508 mm (12" - 20")

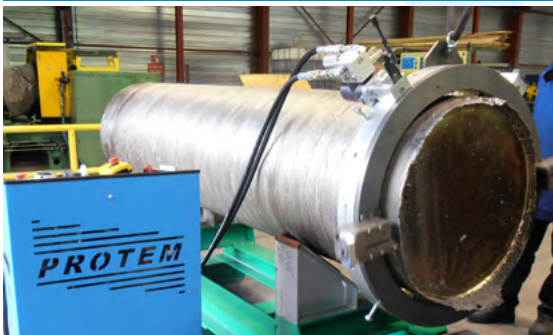
≈ 86 kg  
≈ 189 lbs

ORDER NO.	DESCRIPTION
TT508	TT508 Cutting and beveling machine with pneumatic drive
TT508HY	TT508HY Cutting and beveling machine with hydraulic drive
TT508E	TT508E Cutting and beveling machine with electric drive

### DIMENSIONS :

ØA	ØB	C	ØD	E	F	G	H	J
517 mm 20.354"	667 mm 26.259"	388 mm 15.275"	790 mm 31.102"	108.6 mm 4.252"	202.6 mm 7.953"	66 mm 2.958"	387 mm 15.236"	572 mm 22.519"

## TT610



TT610 Cutting and beveling machine with pneumatic drive

Ø 406.4 - 610 mm (16" - 24")

≈ 96 kg  
≈ 211 lbs

ORDER NO.	DESCRIPTION
TT610	TT610 Cutting and beveling machine with pneumatic drive
TT610HY	TT610HY Cutting and beveling machine with hydraulic drive
TT610E	TT610E Cutting and beveling machine with electric drive

### DIMENSIONS :

ØA	ØB	C	ØD	E	F	G	H	J
619 mm 24.370"	788 mm 31.023"	449 mm 17.677"	895 mm 35.236"	108.6 mm 4.252"	202.6 mm 7.953"	66 mm 2.958"	473.5 mm 18.622"	624 mm 24.566"

## TT762



TT762 Cutting and beveling machine with pneumatic drive

Ø 558.8 - 762 mm (22" - 30")

≈ 123 kg  
≈ 271 lbs

ORDER NO.	DESCRIPTION
TT762	TT762 Cutting and beveling machine with pneumatic drive
TT762HY	TT762HY Cutting and beveling machine with hydraulic drive

### DIMENSIONS :

ØA	ØB	C	ØD	E	F	G	H	J
775 mm 30.512"	944 mm 37.165"	526 mm 20.708"	1200 mm 47.244"	108.6 mm 4.252"	202.6 mm 7.953"	66 mm 2.958"	551.5 mm 21.692"	776 mm 30.551"

## TT900



TT900 Cutting and beveling machine with pneumatic drive

Ø 660.4 - 914.4 mm (26" - 36")



ORDER NO.	DESCRIPTION
TT900	TT900 Machine à couper et à chanfreiner avec motorisation pneumatique
TT900HY	TT900HY Cutting and beveling machine with hydraulic drive

### ▼ DIMENSIONS :

ØA	ØB	C	ØD	E	F	G	H	J
175 mm 6.889"	325 mm 12.795"	217 mm 8.543"	460 mm 18.110"	108.6 mm 4.252"	202.6 mm 7.953"	66 mm 2.958"	216 mm 8.504"	407 mm 16.024"

## TT1016



TT1016 Cutting and beveling machine with pneumatic drive

Ø 812.8 - 1016 mm (32" - 40")



ORDER NO.	DESCRIPTION
TT1000	TT1000 Cutting and beveling machine with pneumatic drive
TT1000HY	TT1000HY Cutting and beveling machine with hydraulic drive

### ▼ DIMENSIONS :

ØA	ØB	C	ØD	E	F	G	H	J
223 mm 8.779"	373 mm 14.685"	241 mm 9.488"	508 mm 20"	108.6 mm 4.252"	202.6 mm 7.953"	66 mm 2.958"	240 mm 9.449"	431 mm 16.968"

## TT1200



TT1200 Cutting and beveling machine with pneumatic drive

Ø 914.4 - 1219.2 mm (36" - 48")



ORDER NO.	DESCRIPTION
TT1200	TT1200 Cutting and beveling machine with pneumatic drive
TT1200HY	TT1200HY Cutting and beveling machine with hydraulic drive

### ▼ DIMENSIONS :

ØA	ØB	C	ØD	E	F	G	H	J
283 mm 11.142"	433 mm 17.047"	271 mm 10.669"	570 mm 22.441"	108.6 mm 4.252"	202.6 mm 7.953"	66 mm 2.958"	270 mm 10.629"	462 mm 18.189"

## TT1400



TT1400 Cutting and beveling machine with pneumatic drive

Ø 1120 - 1480 mm (44" - 58")



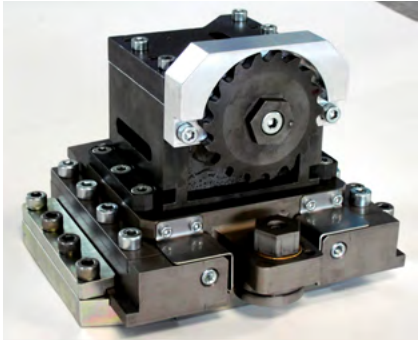
ORDER NO.	DESCRIPTION
TT1400	TT1400 Cutting and beveling machine with pneumatic drive
TT1400HY	TT1400HY Cutting and beveling machine with hydraulic drive

### ▼ DIMENSIONS :

ØA	ØB	C	ØD	E	F	G	H	J
331 mm 13.031"	481 mm 18.937"	295 mm 11.614"	619 mm 24.370"	108.6 mm 4.252"	202.6 mm 7.953"	66 mm 2.958"	294 mm 11.574"	486 mm 19.134"

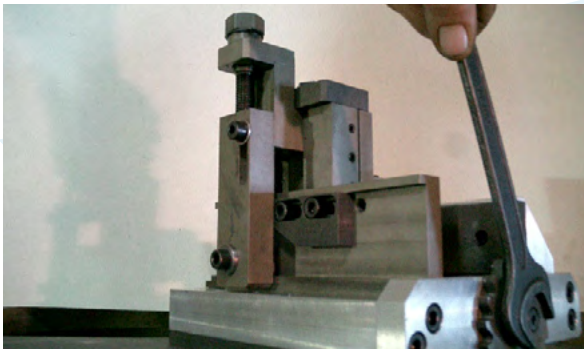


OD Tracker



ORDER NO.	DESCRIPTION
TT-ODT-V1	TT-ODT-V1 OD Tracker for TT219 up tu TT610
TT-ODT-V2	TT-ODT-V2 OD Tracker for TT762
TT-ODT-V3	TT-ODT-V3 OD Tracker for TT900 bis TT1016

Copying carriage



ORDER NO.	DESCRIPTION
TT-KS50	TT-KS50 copying carriage, stroke 50 mm
TT-KS50.S	TT-KS50.S Cam for compound bevel or J-bevel
TT-KS50.S1	TT-KS50.S1 Cam for simple bevel
TT-KS100	TT-KS100 copying carriage, stroke 100 mm
TT-KS.S100	TT-KS.S100 Cam for compound bevel or J-bevel
TT-KS150	TT-KS150 copying carriage, stroke 150 mm
TT-KS150.S	TT-KS150.S Cam for compound bevel or J-bevel

Counter boring carriage



ORDER NO.	DESCRIPTION
TT-DEL50 / TT-NG-OPT11	TT-DEL50 / TTNG-OPT11 counterboring carriage, stroke 50 mm
TT-DEL100	TT-DEL100 counterboring carriage, stroke 100 mm

TTNG

